

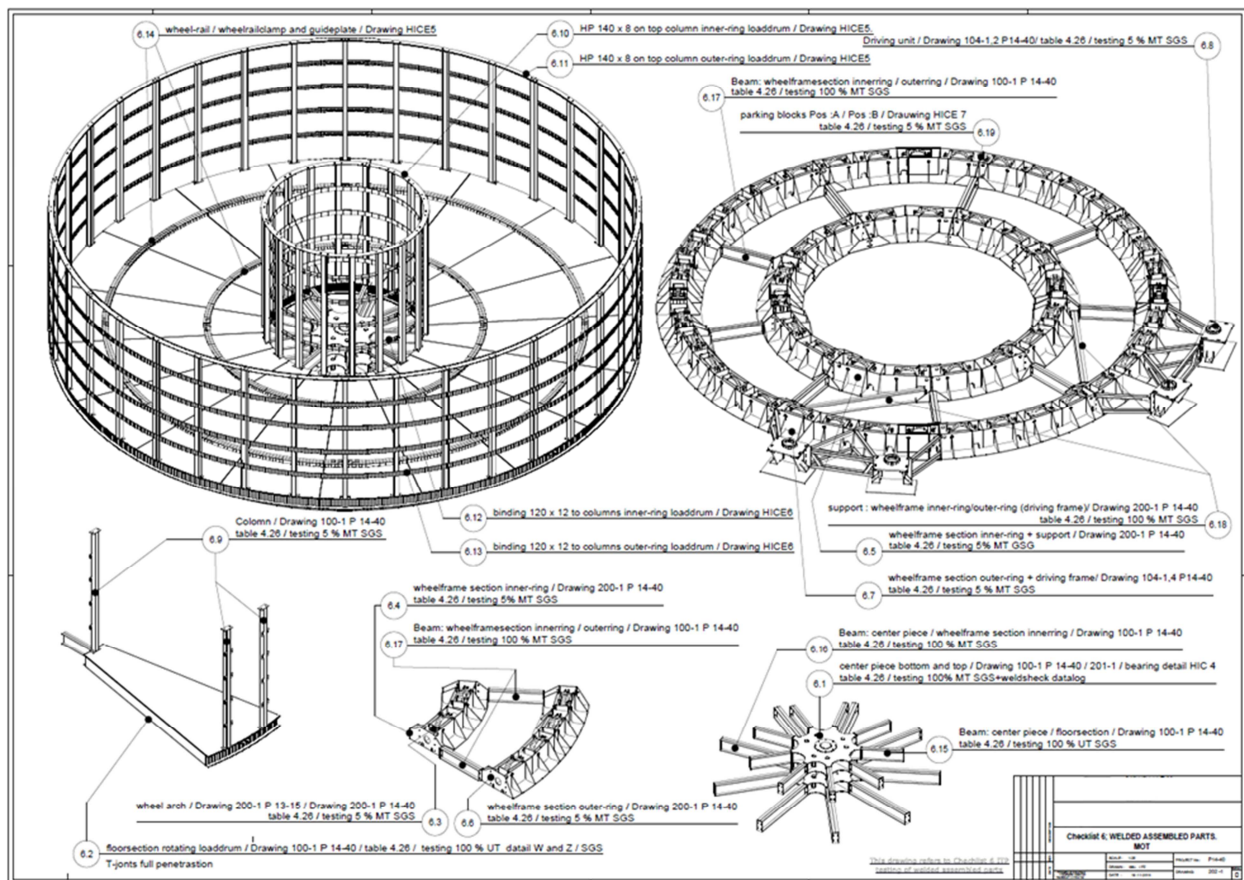
Modular Offshore Turntable



Technical Specification

Turntable construction	In accordance with existing HICE-design (DNV-GL design-approval)	
	Foundation c/w 2 tracks of loadbearing wheels (h=508 mm) Track 1 with diameter 6,640 mm and surface 26 m ² Track 2 with diameter 11,520 mm and surface 40 m ² Track 1 contains 18 pcs loadbearing wheels in hinged carrier Track 2 contains 36 pcs loadbearing wheels in hinged carrier Foundation c/w 2 tracks of loadbearing wheels (h=508 mm)	
	Central bearing connected by star-frame to track 1/2 Turntable deck consisting of 18 segments, 6mm steel plated Outer/inner walls consisting of 4 m high interconnected SHS120, connected by rolled Bulb-Profile	
Dimensions	Outside diameter	14.2 m
	Inside diameter	4.0 m
	Basket internal height	4.0 m
	Basket bottom height	0.85 m
Drives	Electro-Hydraulic power unit, 2 x 75 kW, 400 V 50Hz 4 x hydraulic HICE-sprocket drive (50% redundancy) approx. 20 kW with fixed ring gear on turntable deck HPU can be operated separately	
Coating	1 x primer 'jotun' 0.150 mm 1 x topcoat 'jotun' 0.050 mm RAL 5010 blue	

General Arrangement



General information					
HICE lifting system	hydraulic compensation system with 40 mm stroke lifting the Turntable deck from 0 mm (fixed, non-rotating) to + 40 mm (maximum stroke, rotating) by means of 54 cylinders (stainless rod) divided over 6- sections				
Weight/Capacity	<table border="0"> <tr> <td>Mass (empty) approx.</td> <td>100 t (depends on final lay out)</td> </tr> <tr> <td>Carrying capacity</td> <td>1,000 t</td> </tr> </table>	Mass (empty) approx.	100 t (depends on final lay out)	Carrying capacity	1,000 t
Mass (empty) approx.	100 t (depends on final lay out)				
Carrying capacity	1,000 t				
Load bearing wheels	54 pcs cast iron wheel 400 mm diameter bearing capacity 20.5 t/wheel				
Load distribution	the static Uniform Distributed Load (UDL) generated through the 2 foundation track with the turntable loaded to maximum capacity is approx. 12 t/m ² The foundation tracks are 1.2 m wide with a combined surface of approx. 71 m ²				
General:	DNV-GL certified				



Performance Data

Modular Offshore Turntable	
Rotational speed	1,200 m/hour at centre core (ID)
Electrical requirements	400V/50Hz power supply included
Parking brake	20 seconds from 0 - max.
Accelerations with full load	20 seconds from max. to 0
Braking with full load	10 seconds from max. to 0
Fast Stop Braking with full load	<5 seconds from max. to 0
Emergency Stop Braking with full load	1,200 m/hour at centre core (ID)

Turntable Basement

