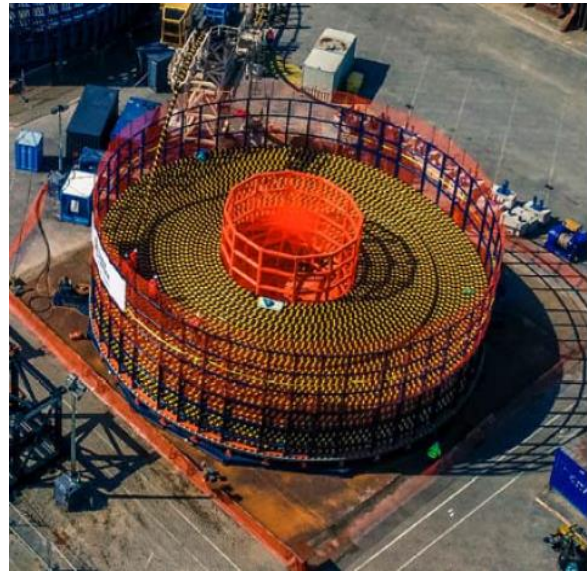


## Carousel 4750T/7000T

### 1) Carousel – 4750 Ton Configuration



#### Technical Specifications:

Dimensions	Outer Diameter : 23.0m Inner Diameter : 6.0m / 8.0m Height : 6.6m
Capacity	4750 Tons
Weight	211.3 Tons
Speed	1000m/hour maximum lay rate
Drive	2 x 160kW Hydraulic motors equipped with Failsafe Brakes
Required Power	440/400V, 60Hz/50Hz, 3 Phase
Design Verification/Certification	Lloyd's Register
Controls	Remote Central Control

#### Other Information

Designed / Manufactured	Made in Netherlands
Year of Built	2018
Current Location	Netherlands
Ownership	Advanced Submarine Networks Pte Ltd (the carousel was previously owned by Dutch Offshore Contractors)



## 2) Carousel - 7000 Ton Configuration



### Technical Specifications:

Dimensions	Outer Diameter : 28.0m Inner Diameter : 6.0m / 8.0m Height : 6.6m
Capacity	7000 Tons
Weight	225 Tons
Speed	1000m/hour maximum lay rate
Drive	2/4 x 160kW Hydraulic motors equipped with Failsafe Brakes
Required Power	440/400V, 60Hz/50Hz, 3 Phase
Design Verification	Lloyd's Register
Controls	Remote Central Control

### Other Information

Designed / Manufactured	Made in the Netherlands
Year of Built	2018
Current Location	Netherlands
Ownership	Advanced Submarine Networks Pte Ltd (the carousel was previously owned by Dutch Offshore Contractors)
Contact	Please contact us: <a href="mailto:d.khaled@submarine-networks.com">d.khaled@submarine-networks.com</a>